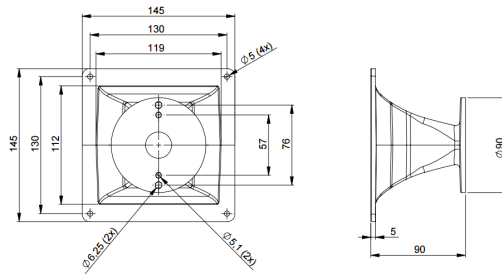


ME20

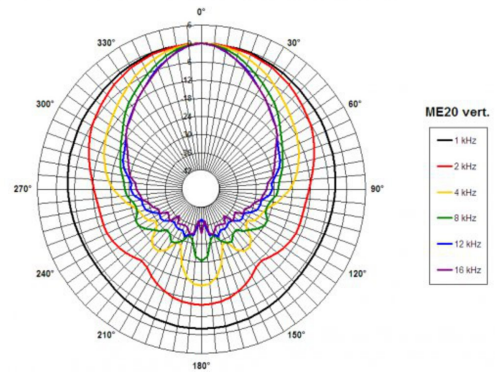
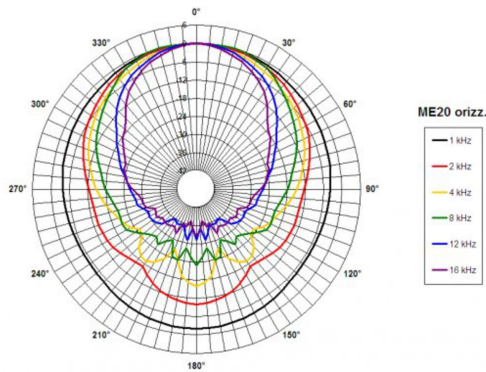
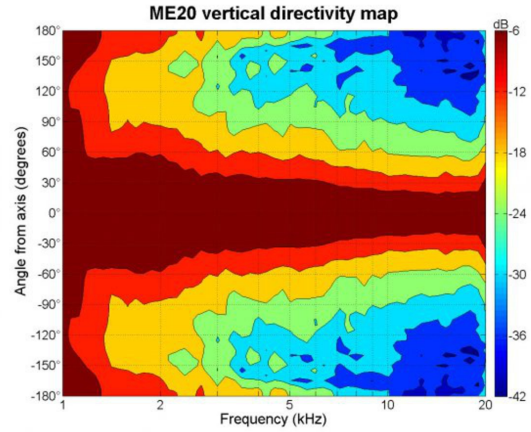
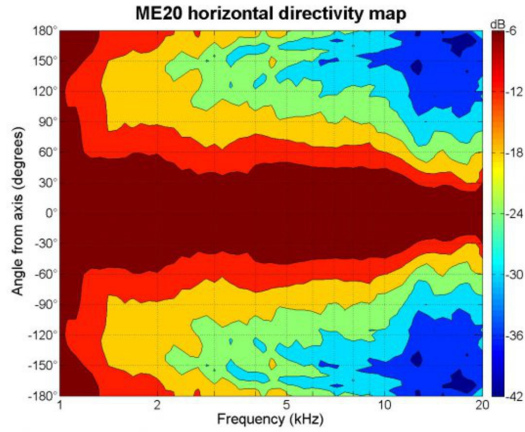
0Ω

Horns - 1.0 Inches

- 1" throat entry
- 90° x 60° nominal coverage
- Exponential flare
- Excellent loading down to 1.5 kHz

ME20

Horns- 1.0 Inches



SPECIFICATIONS¹

Throat Diameter	25 mm (1.0 in)
Nominal Coverage Horizontal	90 °
Nominal Coverage Vertical	60 °
Cutoff Frequency	1.5 kHz
Material	Cast Aluminium
Dimensions	145x145x90 mm (5.7x5.7x3.6 in)

MOUNTING AND SHIPPING INFO

Baffle Cutout Dimension	118x113 mm (4.6x4.4 in)
Air Volume Occupied by Driver	0.1 dm ³ (0.0 ft ³)
Net Weight	0.45 kg (0.99 lb)
Shipping Units	1
Shipping Weight	0.46 kg (1.01 lb)
Shipping Box	165x165x100 mm (6.50x6.50x3.94 in)

Other Details
 2x 6.3 mm (0.25 in) holes 180° on 76 mm (3 in) diameter --- 2x 5.1 mm (0.2 in) holes 180° on 57 mm (2.24 in) diameter

1. Horn mounted on B&C DE 500 compression driver.